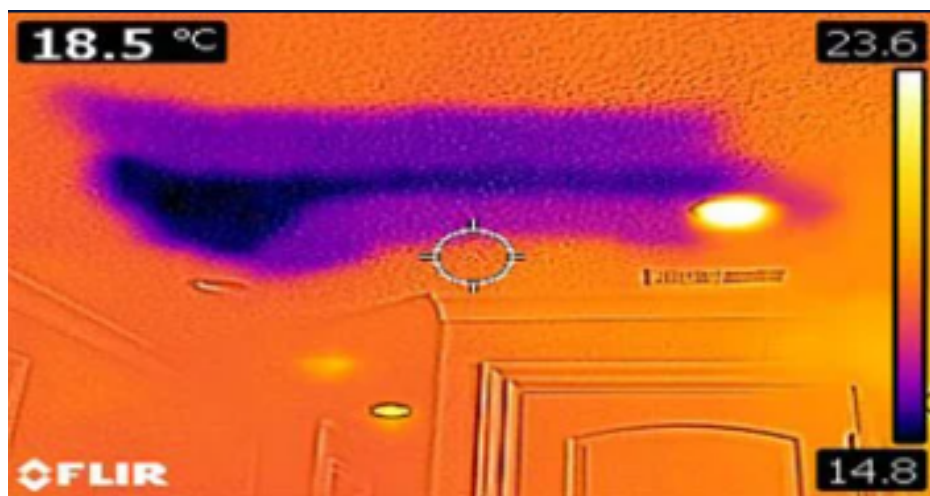


GO GREEN WIDCOMBE

How to work the thermal image camera

LOOKING ROUND the camera

First turn the camera on (left hand button on the top). Wait a short time for the thermal image to appear with the coloured temperature-scale bar on the right of the screen.



Take note of the Temperature Scale. It shows the range of temperatures in the image. It's constantly changing to fit the range currently in view. The small white circle in the centre gives the temperature at that spot in °C, top left.

Press the touch screen once and a menu bar arrives.

We suggest leaving settings as they are - otherwise feel free to explore.

The camera needs to be set in Thermal MSX mode where photo and thermal images are overlaid.

Touch the screen again to remove the menu.

NOW MAKE A START

You find you'll get most information when it's cold outside (ideally < 5°C) and warm inside - even turning your heating up. Play with it looking at different objects - or faces!

Inspect the corners of a room or the edges round windows and doors. You'll notice it's cooler there, showing more blue, and that's because the warm air of the room isn't circulating there. It's the same behind furniture standing against a wall.

The heat rays (infrared) travel in straight lines - and you'll see your reflections in windows etc. You'll also be surprised to see your foot prints and finger prints!

Now you can go round your house checking out all those places of interest. We suggest you include all those common heat loss problems we've listed here: [\(pdf\)](#). You'll find we make suggestions as to how to address those problems.

SAVING IMAGES

If you want you can save the images as you go - and even transfer them to your computer.

The longer "Big Snapshot Button" button is for saving images. This is quite hard to press, so squeezing between thumb and fingers with both hands is easier.

You can inspect saved images by pulling up the menu and touching the arrow icon on the left. You can then scroll through your saved images. Return to camera by touching the camera icon on right end of the menu.

Should you want to transfer the images to your computer, you can do it yourself but it's a bit of a job if you're not very tech'y. Otherwise you can follow these steps:

1. On your phone, download the FLIR tools app here: <https://www.flir.co.uk/products/flir-tools-app/> (Android, iPhone or iPad) and install.
2. On the camera menu bar, select settings, then wifi, then share. Your camera now operates as a router. Note a code appears.
3. Back to your phone and go to settings, then wifi, then ignore your usual wifi connection and select the code from your camera/router.
4. Now go the FLIR tools icon on your phone and find your images!

Please turn the camera off when you've finished by pressing the on/off button.

If you have any questions, call Tim Williamson on 07800 964458 or use ggwidcombe@gmail.com.

Covid 19 precautions:

The camera will be kept inside a plastic box. The outside and inside of the box will have been cleaned, and 72 hours passed. So it should be safe to open.

When handling the camera, we advise you to use rubber or disposable gloves.

When you have finished, it is your vital responsibility to clean both the camera and the box with soap or alcohol wipes as demonstrated for phones here:

<https://www.bbc.co.uk/news/av/technology-51863924>

Please return it in a clean compostable caddy bag. Thanks so much.